



Thakeham
LANDSCAPING PRODUCTS



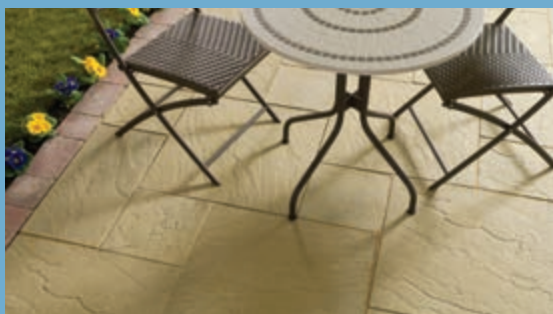
Gardens and
Driveways Range

www.thakeham.co.uk

Welcome to Thakeham

For over 80 years we have been producing and supplying an evolving range of garden products throughout the South East.

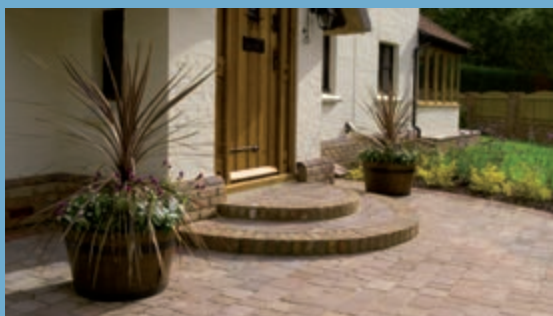
We now look forward, in this brochure, to introducing you to our latest collection of paving slabs, block paving and walling blocks. And remember, as a local producer our full range of products and support is never far away.



Regency, York



Sunwall Floral, Cream



Chiltington, Rustic

Contents

Paving	04
Regency Paving	04
Regency Circles	06
Flagstone Paving	08
Flagstone Circles	10
Sovereign Paving	12
Sussex Paving	14
Nordic Paving	15
Walling	16
Rock Faced Walling	16
Cleftstone Walling	16
Sunwall Floral Screen Walling	17
Caps, Coping and Path Edging	18
Block Paving	19
Thakeham 50 & 60	20
Cobblestone	21
Chiltington Rumbled	22
Laying Patterns	24
Laying Advice	26
Important Information	27



*'Our extensive decorative range
is produced in the heart of Sussex
from responsibly sourced materials.'*

Thakeham Regency Paving®

Thakeham's Regency Paving® is a long established quality product and is truly versatile. With its practical shallow riven surface, a wide range of colours and sizes, Regency Paving can be used to create almost any look you wish.

Choose Slate or Grey to create a modern contemporary feel, Red, Yellow and Stone for a classical look or York for something more traditional.



Regency, York

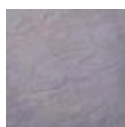


Regency Stepping Stones

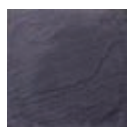
Regency Stepping Stones are ideal for keeping grassed areas preserved, as well as being attractive additions to the garden. They are available in two sizes in all of the six Regency colours.

Regency, Red

Colours



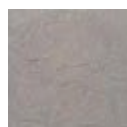
Grey



Slate



Stone



York



Yellow



Red

Sizes Available (nominal)

Paving

600 x 600mm
600 x 300mm
300 x 300mm
450 x 450mm
450 x 225mm

Nominal Thickness
38mm

Stepping Stones

450mm
300mm

Other Information



Manufactured locally



Best laid on full mortar bed and pointed



Natural shade variations can occur



De-icing salts can damage concrete surfaces



Full information on page 27



Regency, Stone



Top: Regency, York Bottom Left: Regency, Yellow Bottom Right: Regency, Grey

Thakeham

Regency Circles

Regency Circles are available in a number of sizes and offer an exciting extension to the Regency range.

Available in all six Regency colours, a circle can be used to add an interesting focal point to your garden or to create curved features within your design.

Regency Circles are made to order.



Regency, Slate and Grey

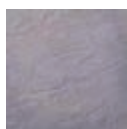


Regency Squaring-Off Kit

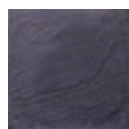
The Regency Squaring-Off Kit allows you to incorporate the 2 ring circle into a paved area, helping you to create a good sized patio with an eye catching feature.

Regency, Grey

Colours



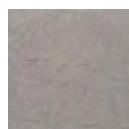
Grey



Slate



Stone



York



Yellow

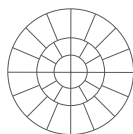


Red

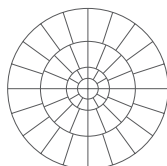
Sizes Available (nominal)



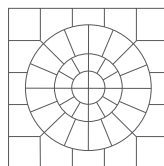
1 ring, 900mm



2 ring, 1800mm



3 ring, 3000mm



Squared 2 ring,
2250 x 2250mm

Other Information



Manufactured locally



Best laid on full mortar bed and pointed



Natural shade variations can occur



De-icing salts can damage concrete surfaces



Full information on page 27



'Adding Regency Circles can make your paving truly unique.'

Thakeham

Flagstone Paving

Flagstone Riven Edge Paving successfully reproduces and captures the elegance of natural York stone. The colours, surface textures and edge details have been carefully selected to suit the regional character of traditional gardens.

Flagstone Paving is available in seven different sizes, permitting a random laying pattern in keeping with the style of classic stone flagging.



Flagstone, Autumn



Flagstone 7.3m² Patio Pack

Designed to make planning your patio easy and economical, our Flagstone Patio Pack contains all the slabs you require to cover an area 7.3m². Using three sizes, a simple random pattern can be followed and a number of packs may be joined together to create a larger area. Ask your stockist for more information.

Flagstone, Weathered Old York

Colours



York



Old Cotswold



Vintage



Weathered Old York



Autumn

Sizes Available (nominal)

600 x 600mm
600 x 300mm
300 x 300mm
600 x 450mm
450 x 450mm
450 x 300mm
450 x 225mm

Nominal Thickness
38mm

Other Information



Manufactured locally



Best laid on full mortar bed and pointed



Natural shade variations can occur



De-icing salts can damage concrete surfaces



Full information on page 27



Flagstone, Old Cotswold



'Match the natural tones of your garden with Flagstone Paving's rustic colour blends.'

Thakeham

Flagstone Circles

Flagstone circles can be used to add an interesting centrepiece to your garden, or used to create curved pathways and steps within your design.

A Flagstone Squaring-Off Kit is also available, so you can incorporate the 3 ring circle into your patio.



Flagstone, Weathered Old York



Flagstone Pathways

A series of authentically detailed Flagstone Stepping Stones, available in two patterns, can be used for pathways. Alternatively, use a combination of circle segments to create winding paths.

Flagstone, York (Left: Pattern A, Right: Pattern B)

Colours



York



Old Cotswold



Vintage



Weathered Old York

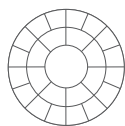


Autumn

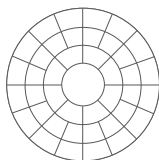
Sizes Available (nominal)



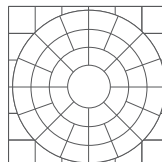
1 ring, 1500mm



2 ring, 2400mm



3 ring, 3300mm



Squared 3 ring,
3600 x 3600mm

Other Information



Manufactured locally



Best laid on full mortar bed and pointed



Natural shade variations can occur



De-icing salts can damage concrete surfaces



Full information on page 27



'Create curved steps, winding paths or a stunning centrepiece using Flagstone Circles.'

Thakeham

Sovereign Paving®

With its antique colours and hand tooled textures, Sovereign Paving® successfully captures the smooth timeworn look of chancery settings.

By using the Sovereign Corner piece an impressive Sovereign Square can be created of any size.



Sovereign, York



Sovereign 7.3m² & 10.9m² Patio Packs

Sovereign Patio Packs are available in two sizes. The 10.9m² Patio Pack contains a combination of four different sizes, whilst the smaller 7.3m² Patio Pack contains three sizes. Each can be joined together with similar packs to create larger sized paved areas. Ask your stockist for more information.

Sovereign, York

Colours



York



Gold

Sizes Available (nominal)

900 x 600mm
600 x 600mm
600 x 300mm
300 x 300mm
600 x 450mm
450 x 450mm
450 x 300mm
450mm Corner

Nominal Thickness
40mm

Other Information



Manufactured locally



Best laid on full mortar bed and pointed



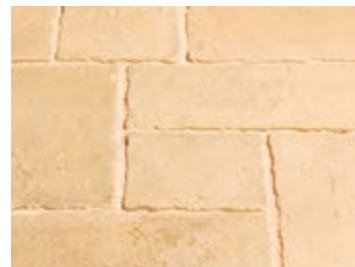
Natural shade variations can occur



De-icing salts can damage concrete surfaces



Full information on page 27



Sovereign, Gold



'Recreate the charm and character of yesteryear with Sovereign Paving®.'

Top Left: Sovereign, York

Top Right: Sovereign, York

Bottom: Sovereign, Gold

Thakeham Sussex Paving

Sussex Paving offers a practical alternative to traditional riven paving. With its textured surface and standard size format, a simple attractive paved area can easily be constructed by both the DIY enthusiast and professional alike.



Sussex, York



Design Idea

Use panels of paving bordered with block paving to add interest when using one size of paving. Alternatively, use different colours together to form borders or features.

Sussex, Yellow

Colours



Grey



Slate



Stone



York



Yellow

Sizes Available (nominal)

600 x 600mm
450 x 450mm

Nominal Thickness
38mm

Other Information



Manufactured locally



Best laid on full mortar bed and pointed



Natural shade variations can occur



De-icing salts can damage concrete surfaces



Full information on page 27



Sussex, York

Thakeham

Nordic Paving

With its fine stippled surface and timeless design Nordic paving allows you to create a modern minimalist look for your garden. Two distinct colours are available to reflect the contrasting nature of Scandinavian style.



Nordic, Stone



Design Idea

Nordic paving laid with a staggered bond and bordered with our 600mm Path Edging creates a contemporary yet practical space to enjoy.

Nordic, Stone

Colours



Slate



Stone

Sizes Available (nominal)

600 x 450mm

Nominal Thickness
35mm

Other Information



Manufactured locally



Best laid on full mortar bed and pointed



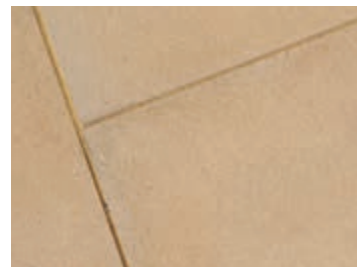
Natural shade variations can occur



De-icing salts can damage concrete surfaces



Full information on page 27



Nordic, Stone

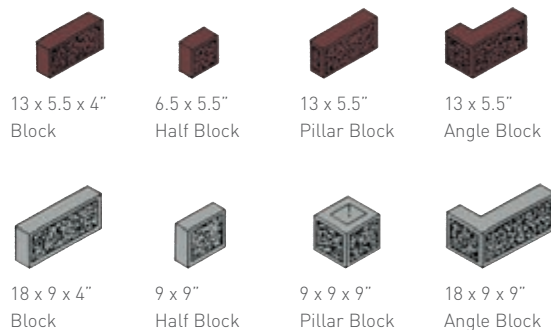
Rock Faced Walling



Rock Faced, Grey

Attractive walls in a variety of designs can be economically constructed with Thakeham double sided and single sided Rock Faced Blocks. These are ideally suited for the construction of decorative garden walls, dwarf walls, terraced walls and garden buildings etc.

Colours and Sizes (nominal)



Sun Red



Grey

N.B. Double sided blocks available in both sizes and colours. Single sided blocks available in 18 x 9 x 4 inch grey only.

Cleftstone Walling



Cleftstone, Weathered Old York

Cleftstone is designed to give the effect of natural stone cleft on all four edges. Cleftstone cuts easily without waste and in construction the best results are obtained by using varying lengths so that bonding is not uniform. A 6 inch cleftstone coping is available to complement this product.

Colours (Size: 18 x 4 x 2.5 inch - nominal)



Grey



Cream



Multicoloured



Weathered Old York

Sunwall Floral Screen Walling



Sunwall Floral, Cream

The Sunwall Screen Walling range gives you the opportunity to create a decorative border to your property, without obscuring the view. In addition to the popular floral design, square and diamond patterns are available to order.

Colours and Sizes (nominal)



End
8 x 8 x 8"



Intermediate
8 x 8 x 8"



Corner
8 x 8 x 8"



Pillar Cap
8.25 x 8.25"



Grey



Cream



Square
Screen Unit 12 x 12 x 4"



Floral



Diamond

Caps, Coping and Path Edging



Pillar Cap

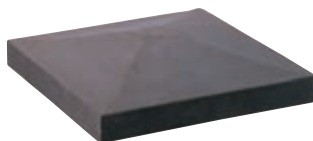
Size: 10 x 10"



6" Cleftstone Coping, Cream

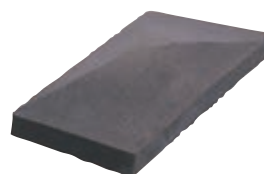
Pillar Cap

Size: 20 x 20"



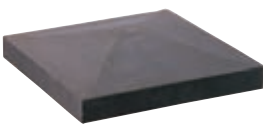
Pillar Cap

Size: 20 x 10"



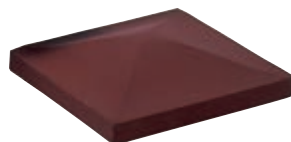
Pillar Cap

Size: 13 x 13"



Pillar Cap

Size: 15 x 15"



Colours: Red, Cream, Grey

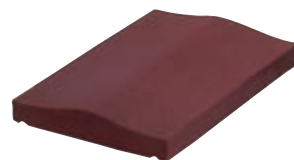
Wall Coping

Size: 24 x 6"



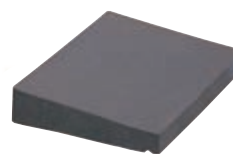
Wall Coping (Double Weathered)

Size: 18 x 12"



Wall Coping (Single Weathered)

Size: 18 x 12"



Colours: Red, Cream, Grey

Edging

Size: 600 x 150mm



Colours: Grey, Yellow, York, Stone, Slate

N.B. Handmade Caps and Coping are manufactured in a semi-dry mix, care should therefore be taken in handling them to avoid damage. Sizes are nominal.



Thakeham

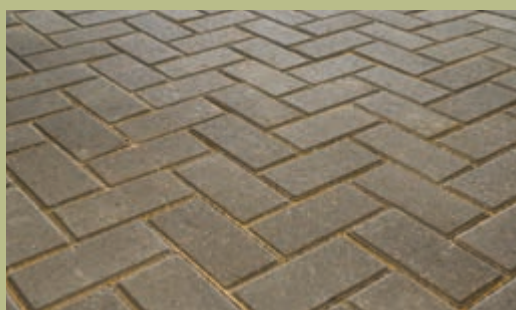
Thakeham 50 & 60

Thakeham 50 & 60 are classic rectangular block paving. This most popular block paving is laid, in numerous interesting patterns, throughout the nation's driveways.

Thakeham 50 is 50mm thick and suitable for most lightly trafficked domestic uses, whereas for heavier vehicles, 60mm thick Thakeham 60 is better suited.

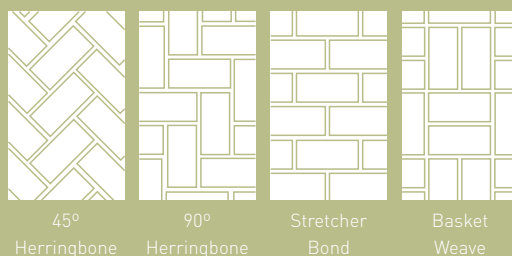


Thakeham 50, Red

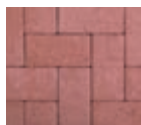


Thakeham 60, Black

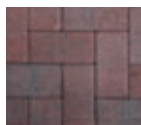
Laying Patterns



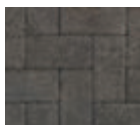
Colours



Red



Brindle



Black

Sizes Available (nominal)

Thakeham 50
200 x 100 x 50mm

Thakeham 60
200 x 100 x 60mm

Other Information



Manufactured locally



Thakeham 50 packs contain 12m²



Thakeham 60 packs contain 10m²



Mix packs for best colour blend



Full information on page 27

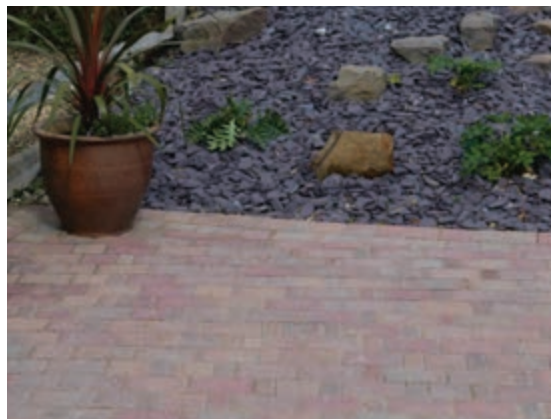


Thakeham 50, Red

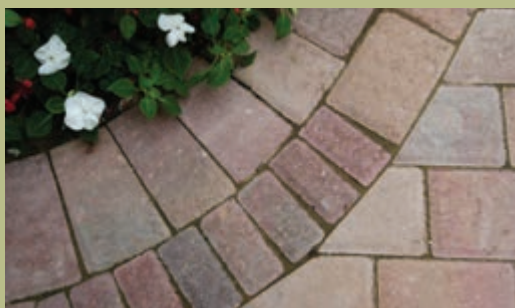
Thakeham Cobblestone

Cobblestone is a unique product and an interesting variation on standard rectangular block paving. Its three sizes and chamfered edge creates an attractive cobble effect. This offers a fresh look to both modern and traditional surroundings.

Cobblestone is 60mm thick, produced in mixed size packs and is most commonly laid in a random stretcher pattern.



Cobblestone, Autumn Gold

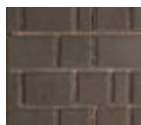


Cobblestone, Autumn Gold

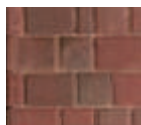
Idea for Edging

Block paving is perfect for edging your driveway. Use the smaller block sizes to create curves to your edging. Choose contrasting colours for great effect.

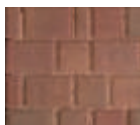
Colours



Black



Brindle



Autumn Gold

Sizes Available (nominal)

Mixed size pack contains:

Large	180 x 120 x 60mm 240 No.
Medium	120 x 120 x 60mm 240 No.
Small	60 x 120 x 60mm 80 No.

Other Information



Manufactured locally



Thakeham Cobblestone packs contain 10m²



Mix packs for best colour blend



Full information on page 27



Cobblestone, Autumn Gold

Thakeham

Chilton Rumbled

Chilton Rumbled is our latest range of block paving and has fast become a most popular choice. With its distinctive colour blends, this antiqued range of paviors can complement a wide range of settings, creating a truly distinctive look to your property.

Chilton is 60mm thick, produced in mixed size packs and is most commonly laid in a random stretcher pattern.



Chilton, Rustic

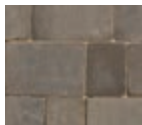


Chilton, Brindle

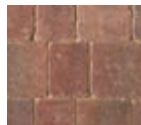
Block Paving for the Garden

Although traditionally used for driveways block paving is making its way into the back garden. Not only can a mixture of surfaces create interesting designs, but the flexibility and level finish to block paving can help you get the most out of your patio area.

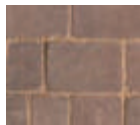
Colours



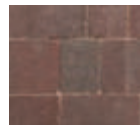
Granite



Autumn Gold



Rustic



Brindle

Sizes Available (nominal)

Mixed size pack contains:

Large 224 x 150 x 60mm 132 No.
Medium 150 x 150 x 60mm 132 No.
Small 112 x 150 x 60mm 132 No.

Other Information



Manufactured locally



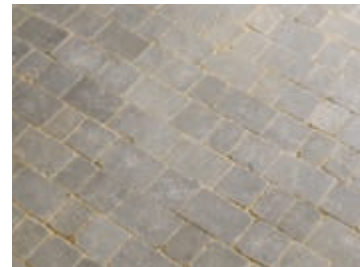
Pack contains 10m²



Mix packs for best colour blend



Full information on page 27



Chilton, Granite

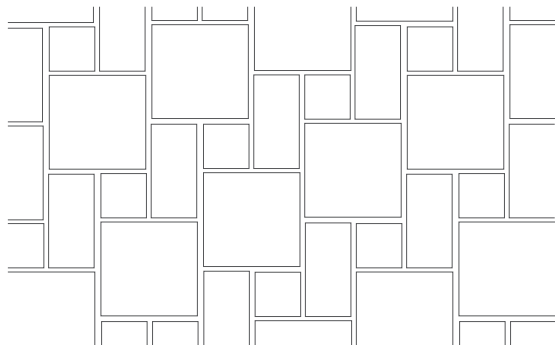


Laying Patterns

Paving - Repeating

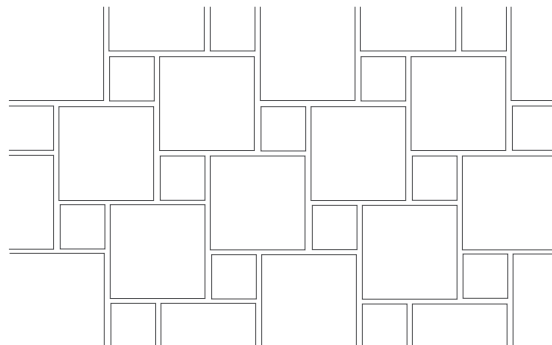
Tudor (Regency, Flagstone, Sovereign)

Sizes: 600 x 600mm, 600 x 300mm, 300 x 300mm



Dutch (Regency, Flagstone, Sovereign)

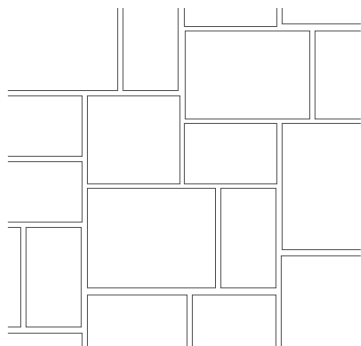
Sizes: 600 x 600mm, 600 x 300mm, 300 x 300mm



Paving - Random

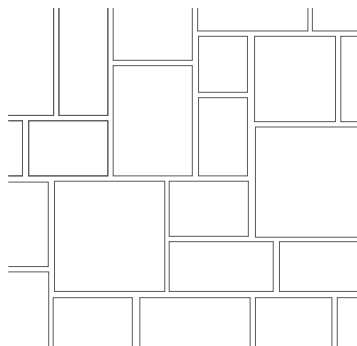
Rectory (Flagstone)

Sizes: 600 x 450mm, 450 x 450mm, 450 x 300mm, 450 x 225mm



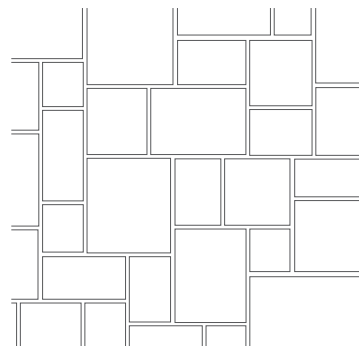
Courtyard (Flagstone, Sovereign)

Sizes: 600 x 600mm, 600 x 300mm, 300 x 300mm, 600 x 450mm, 450 x 450mm, 450 x 300mm

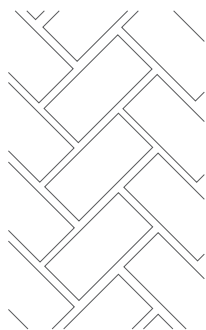


Windsor (Sovereign)

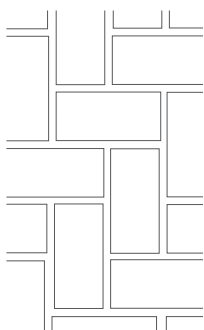
Sizes: 900 x 600mm, 600 x 600mm, 600 x 450mm, 600 x 300mm, 450 x 450mm, 450 x 300mm, 300 x 300mm



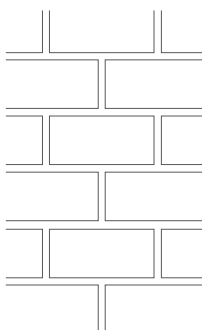
Block Paving Patterns



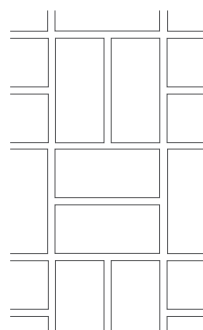
45° Herringbone



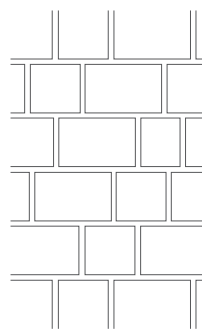
90° Herringbone



Stretcher Bond



Basket Weave



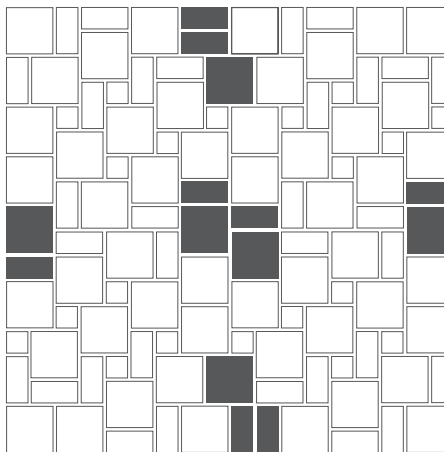
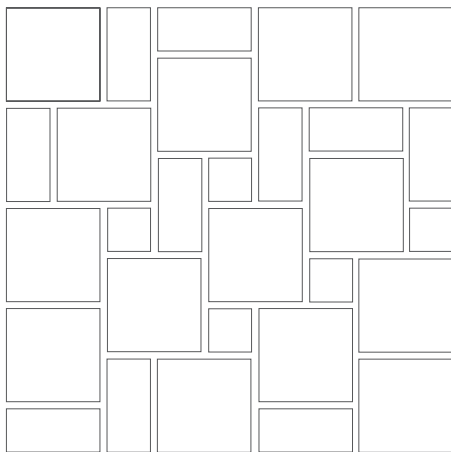
Random Stretcher Bond

Patio Packs

7.3m² 600 Series

Sizes (number in pack): 600 x 600mm (14), 600 x 300mm (10), 300 x 300mm (5).

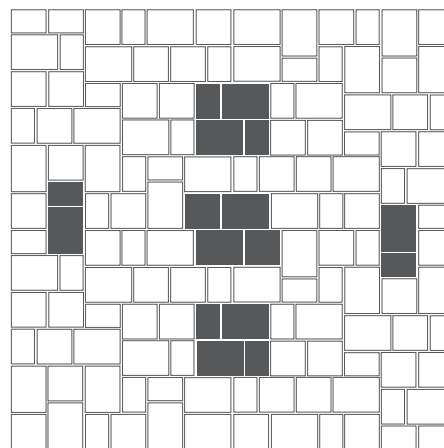
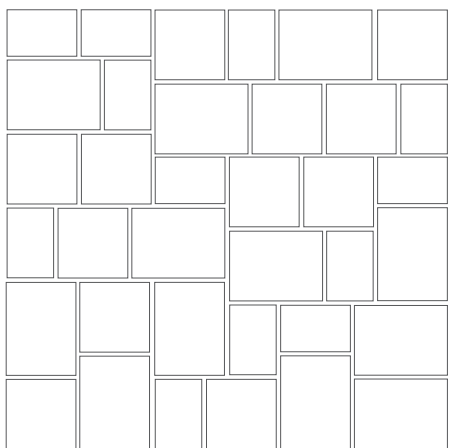
Multiple Packs can be joined together by rotating packs and swapping slabs.



7.3m² 450 Series

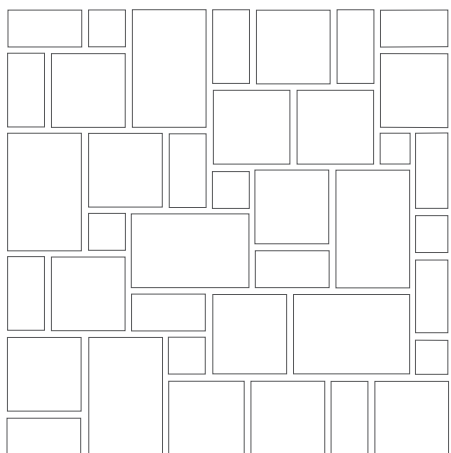
Sizes (number in pack): 600 x 450mm (12), 450 x 450mm (12), 450 x 300mm (12).

Multiple Packs can be joined together by rotating packs and swapping slabs.



10.9m² 900 Series

Sizes (number in pack): 900 x 600mm (6), 600 x 600mm (13), 600 x 300mm (13), 300 x 300mm (7).



Laying Advice

Laying a Patio

Planning

Decide on which combination of different sized slabs to use. This depends on the size of area and personal preference, though with larger areas it is advisable to use a number of sizes.

Draw a layout plan for the area to be paved, avoiding the need to cut slabs if possible.

Preparation

Mark out the area on the ground to be paved and remember to allow for a fall away from buildings to assist the drainage of water. This can be done by providing a gradient of at least 1:40 or steeper, towards adequate drainage. The paving surface must be at least 150mm below the damp proof course in any adjacent wall.

Preparation depends upon the site conditions, intended use and the final desired standard of workmanship. In good firm ground conditions removing the turf and soil to a depth to accommodate a 30-40mm sand bed plus the slab and mortar, can give good results. In areas where the soil is wet and drainage poor, remove more subsoil and put in 125mm of well compacted sub base before laying the sand bed, plus slabs and mortar. To reduce settlement and to permit heavier loads, the laying of a solid 140mm thick concrete base onto which the slabs are bedded with mortar will give the best results.

Laying

Always dry lay your patio first to check that you are happy with the result.

Select paving from different packs throughout the job to blend colour shades.

Whether laying on a solid concrete base or a well-compacted sand base a good workable mortar of 1 part masonry cement to 5 parts sand is recommended. A full mortar bed should be used for best results. The slabs are placed, positioned and then tapped down to the correct level using a rubber mallet.

Remember from the planning stage to allow for rainwater drainage and check levels as you progress using a spirit level across a number of slabs. Stringlines can be useful to check levels and lines within the laying pattern.

Maintain the correct joint width by gently shuffling with a trowel, temporary spacers can be used to help. A joint width of 10-15mm usually gives the best result though this does differ with different products.

If unavoidable, paving can be cut using the correct disc cutters with suitable safety equipment, to prevent inhalation of dust and injury.

Do not walk on the paving for at least 24 hours after laying. During wet or frosty weather cover the paving until mortar has cured, then point as soon as possible.

Pointing

Once all your slabs are laid, point the joints using a semi-dry mortar mix of 3 parts building sand to 1 part cement. The mix should not be too wet or dry. Care should be taken not to mark the surface of the slabs as cement stains are hard to remove.

Laying Block Paving

Planning

It is important to check the suitability of your intended foundations with a professional, based on your requirements e.g. traffic type and your site's ground conditions.

For most domestic applications, it is usually sufficient to dig out 260mm below the block paving surface, assuming a block depth of 60mm, a screeding layer of 50mm and subbase of 150mm.

Ensure the surface of the block paving is at least 150mm below the damp proof course in any adjacent wall. You will need to plan for a fall of at least 1:40 towards suitable drainage.

Groundwork

Mark out the area and dig out to the required depth, making sure you dig out any soft spots and backfill with well compacted subbase.

Tap in wooden pegs to show the levels for the finished surface, including the required gradients. Install all required drainage materials. Infill the foundations to the required depth for the subbase. A well compacted MOT Type 1 usually gives good results.

Edge Restraints

Block paving must be surrounded by a firm edge restraint to prevent movement of the blocks during use and loss of the sand layer.

Kerbs, walling, decorative edging, or even the block paving can be used. These must be laid on a concrete bed and haunched in the concrete, then allowed to cure and strengthen prior to any vibration.

Screeding

Screed out a layer of coarse concreting sand, to a depth of 65mm, within the edged area and compact with a plate vibrator to a depth of 50mm. More sand may need to be added.

Laying

It is important to not only draw simultaneously from at least three packs, but to also draw down vertically from each pack, rather than layer by layer. This will give the best colour blend and overall result, as colour variations will occur, even in single colour blocks.

Start laying from a corner or long edge and proceed along the laying face, according to the pattern.

Use stringlines and adjust the widths of the joints to within 2-5mm, to ensure the lines in the pattern remain straight. Remember to avoid straight joints running across courses, when following a staggered bond pattern.

To fill gaps along the edge, cut blocks using either hammer and bolster, mechanical block splitter, or power cutter, adhering to all relevant safety advice. Avoid using blocks less than a quarter of their original size.

Vibrating

Brush bedding sand into the joints to partially fill them and to provide stability for the initial vibration.

Ensure the surface of the block paving is clean and vibrate the paving to settle the sand in the joints.

Top up the joints with kiln dried sand, sweep the surface and pass the vibrator over the whole area, several times, to level the area. Brush more kiln dried sand into the joints and vibrate for the final time. After a final sweep the paving is ready for use.

Important Information

Cleaning

High pressure washers are not recommended for use on wet cast paving.

Colour

Colours shown in this brochure are as accurate as print production methods allow. We strongly recommend final choices of colour should be made from actual samples of the product. Your local stockist should be able to supply samples, if not then please contact us.

Variations in colour within the concrete product ranges are normal, although every effort is made to ensure colour consistency of product colour. However, variations between production batches do occur. We therefore strongly recommend that when purchasing our products, especially in large quantities, they all come from the same batch and that the products are thoroughly mixed by drawing from a number of packs. The Company does not accept liability for any shade variation. Poor drainage may result in water retention which could affect the way the paving reacts to the natural weathering process, which in itself can affect paving colour.

De-icing Salts

De-icing salts should not be applied to any concrete products as surface damage can occur.

Differential Weathering

Occasionally dark shade variations can occur on individual slabs due to differential weathering. This natural phenomenon is caused by the surface of the paving curing at different rates after manufacture and in its early life. Natural changes in ambient temperature and humidity can cause this variation and the effect normally diminishes with time as the paving matures. It is in no way detrimental to the long-term durability of the product and responsibility cannot be accepted for this natural occurrence.

Efflorescence

Concrete products with high cement content may suffer the temporary phenomenon of efflorescence. This is not detrimental to the performance of the material and responsibility cannot be accepted for this occurrence.

Health and Safety

Concrete products can be heavy and awkward to handle. Refer to the Health and Safety Executive's guidance on manual handling prior to working with such products.

It is recommended that work gloves are used to prevent abrasion to hands and lime burns from wet mortar. Eye protection and dust masks should also be used when cutting with either chisels or disc cutters.

For further health and safety information download our Concrete Products Data sheet.

Product Improvement

Thakeham policy is one of continuous improvement and we reserve the right to change specifications without notice.

Replacements

Should a product reach you in an unsatisfactory condition, other than a naturally occurring one, as described in this section, the defect would have to be apparent prior to laying. It is at this point that the supplier should be notified of such a fault, allowing time for the rejected product to be replaced. If the complaint is raised after the laying of the product, no responsibility will be accepted for any relaying and removing costs.

Stock

Certain products may not be held by stockists as 'stock' items. Most stockists will be prepared to obtain these products for you. Should you experience problems obtaining the items you require please contact us.

Suitability

Thakeham paving slabs are decorative garden products intended for use in domestic landscaping applications.

Other Products

Thakeham Calxite and Teklite

Dense & Medium Dense Aggregate Concrete Blocks Manufactured to BS EN 771-3



Thakeham's Calxite range of dense aggregate blocks is Close Textured as standard and is available in a number of sizes and configurations. A more open textured General Purpose finish is also available in selected sizes.

Thakeham's Teklite range of medium dense blocks is available in a General Purpose finish in both 100mm and 140mm solid configurations.

Compressive strengths of 7.3N/mm² are standard throughout most of the ranges, though higher strengths can be produced to order.

Thakeham Tiles Ltd. is a member of:



CONCRETE BLOCK
ASSOCIATION



Thakeham Tiles Ltd. thanks these companies for their valued support in the production of this brochure.



Thakeham Tiles Limited
Rock Road, Storrington, West Sussex RH20 3AD

For your nearest supplier visit www.thakeham.co.uk